



# THE IDYLLIC

*by Eunomia Homes*

LAYOUT HANDBOOK

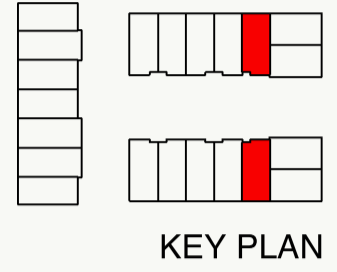


# A1

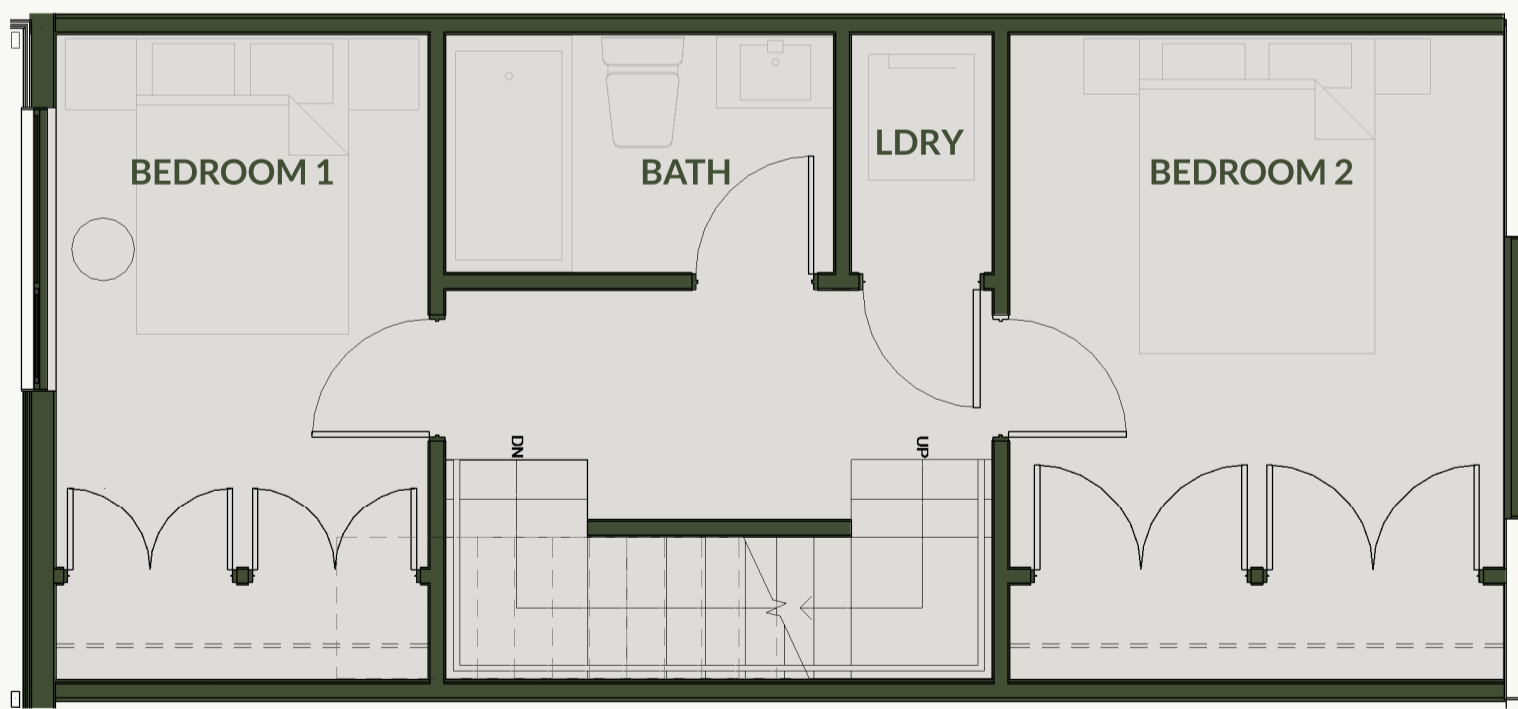
## Main Floor | Above Floor

Interior : 1341 SF  
Exterior : 182 SF  
Total : 1523 SF

A1 - Main Floor



A1 - Above Floor

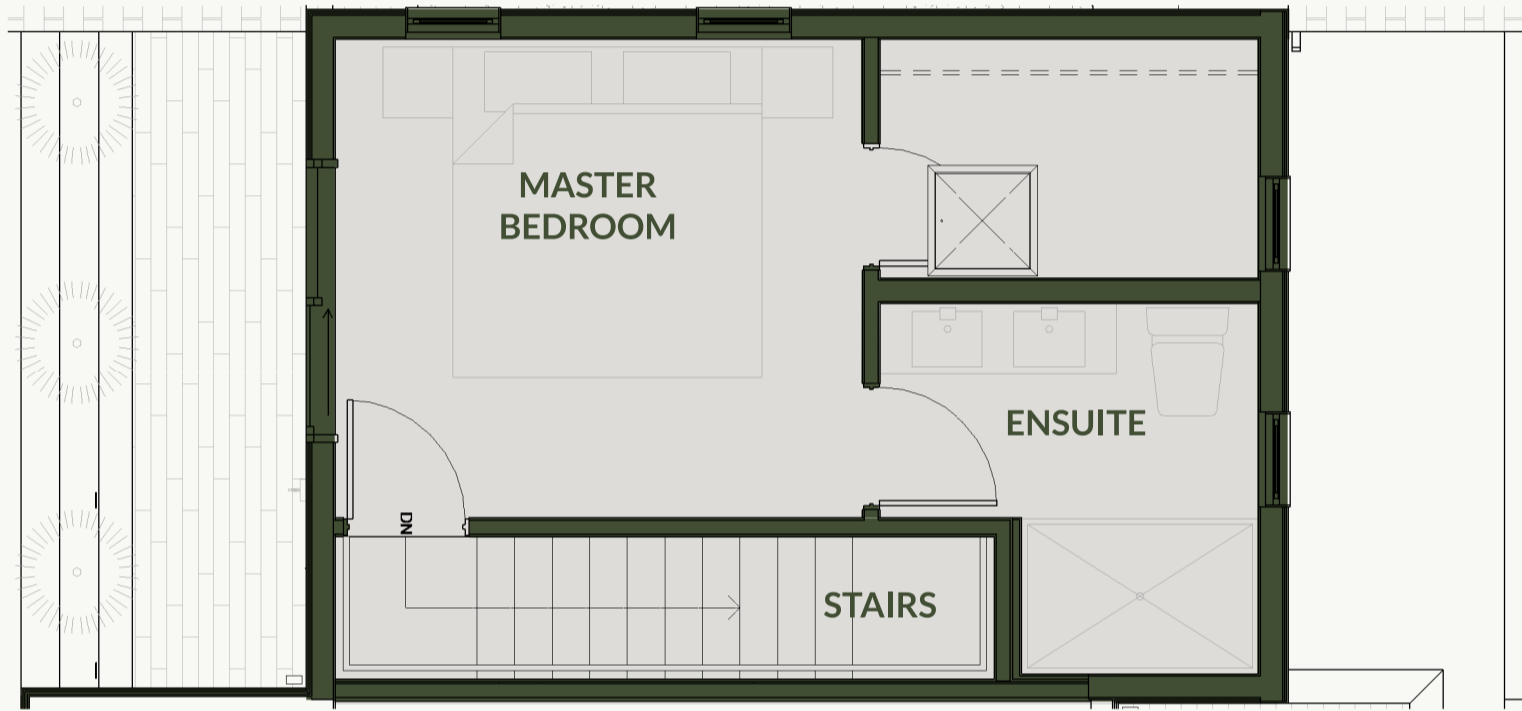
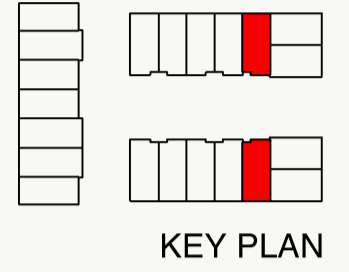


# A1

# Above 1 Floor | Basement

Interior : 1341 SF  
Exterior : 182 SF  
Total : 1523 SF

A1 - Above 1 Floor



A1 - Basement

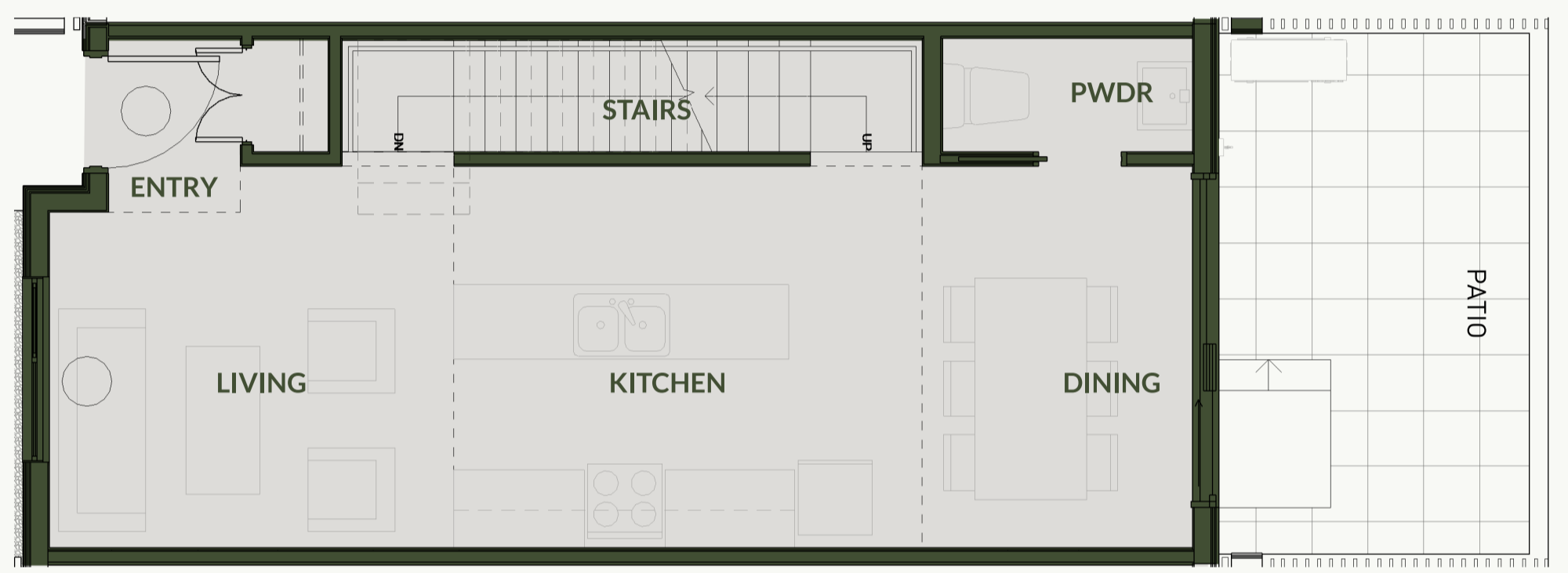
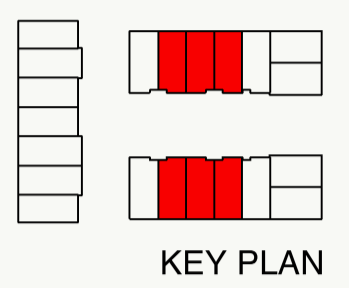


# A2

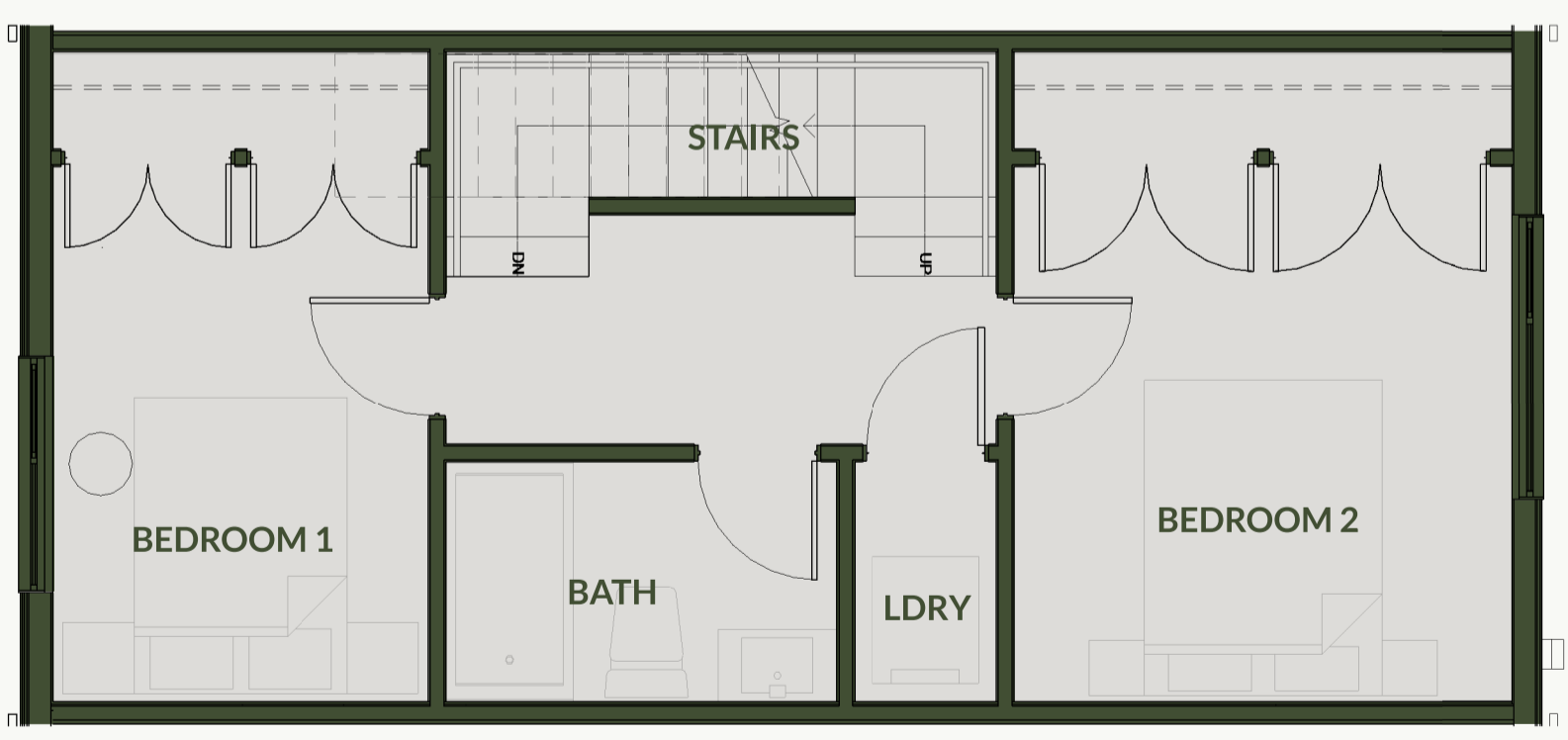
## Main Floor | Above Floor

Interior : 1418 SF  
Exterior : 222 SF  
Total : 1640 SF

A2 - Main Floor



A2 - Above Floor

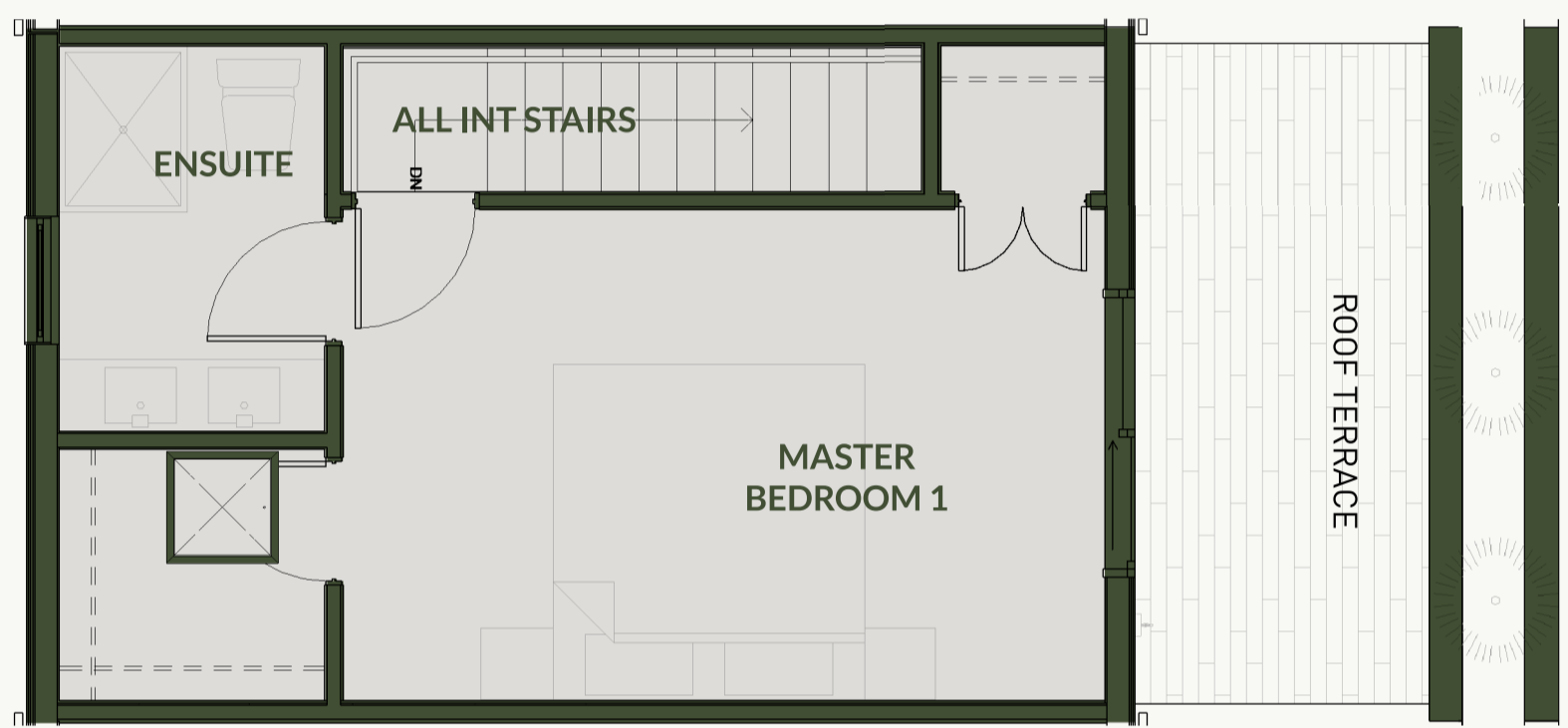
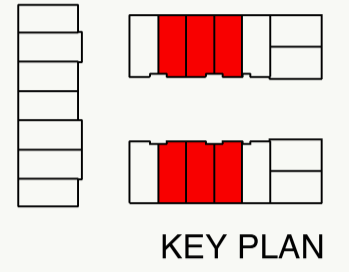


# A2

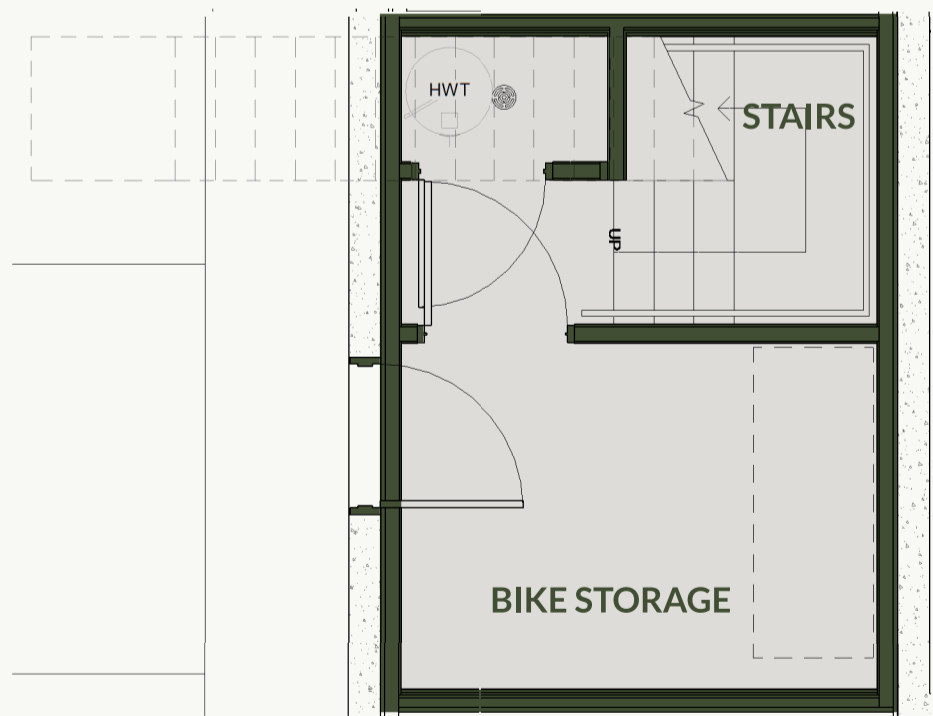
## Above 1 Floor | Basement

Interior : 1418 SF  
Exterior : 222 SF  
Total : 1640 SF

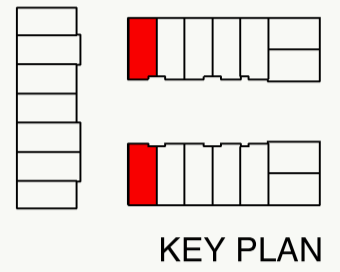
A2 - Above 1 Floor



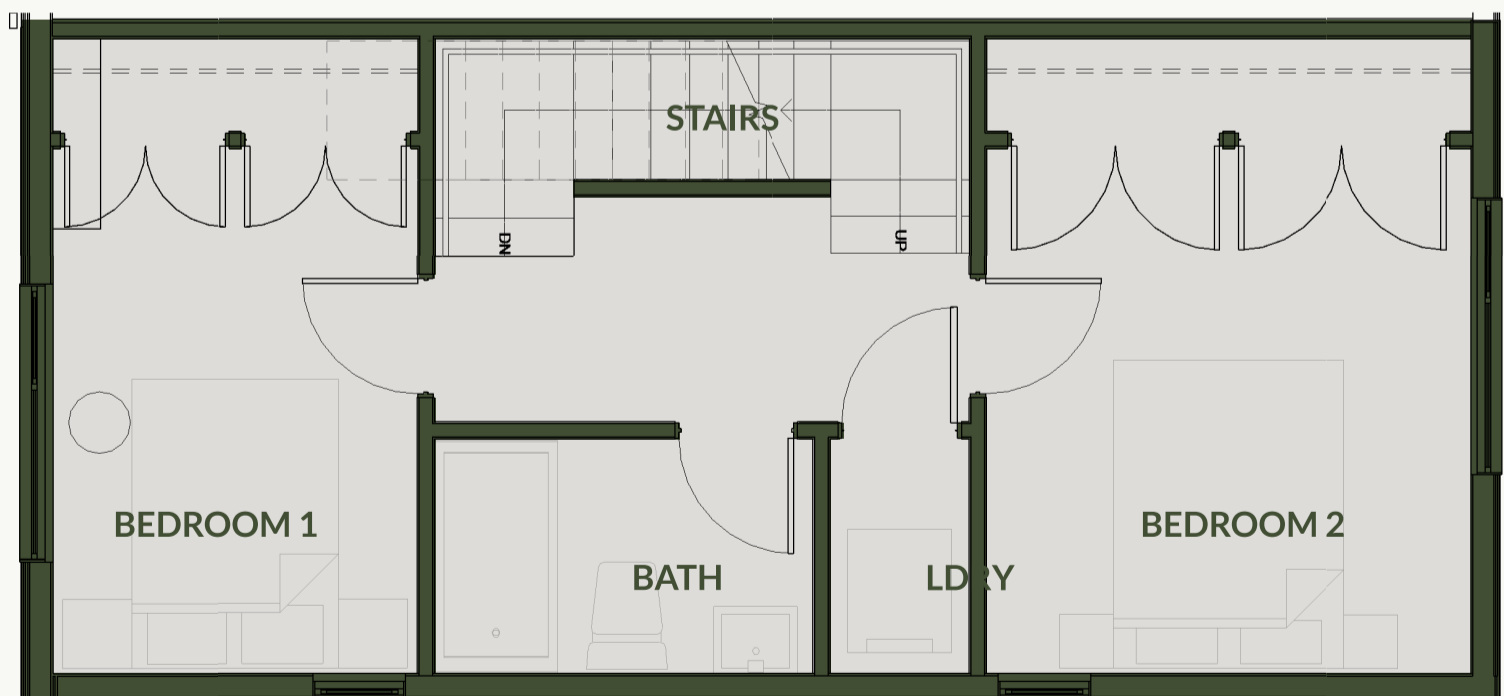
A2 - Basement



### A3 - Main Floor



### A3 - Above Floor

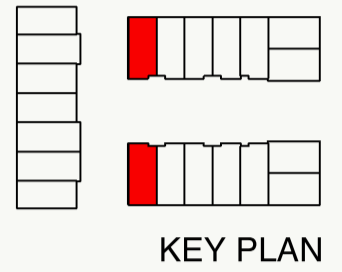


# A3

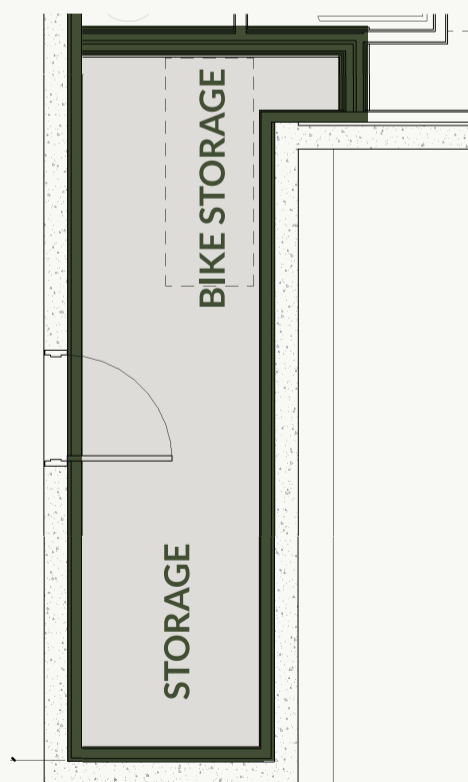
## Above 1 Floor | Basement

Interior : 1361 SF  
Exterior : 183 SF  
Total : 1544 SF

A3 - Above 1 Floor



A3 - Basement

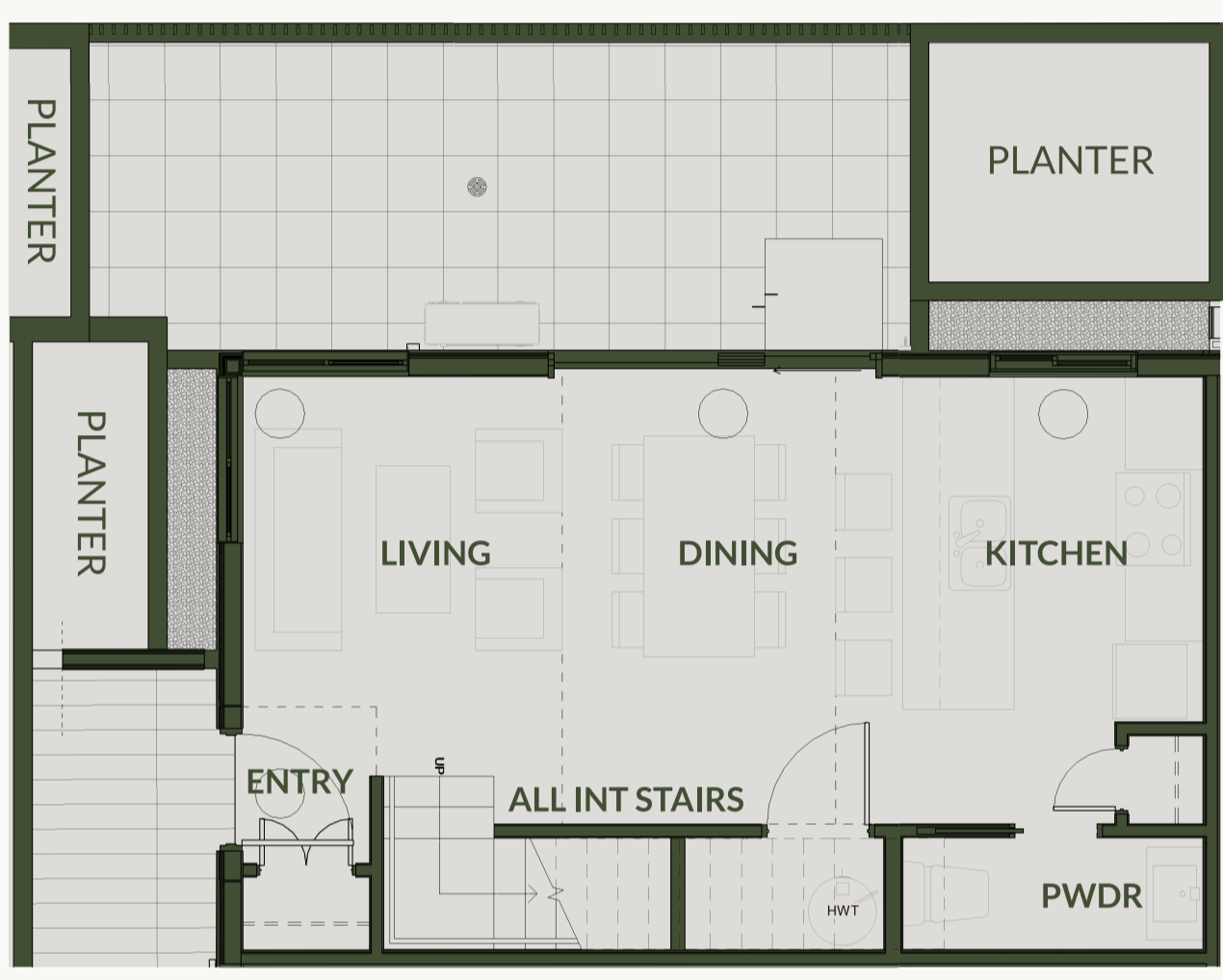
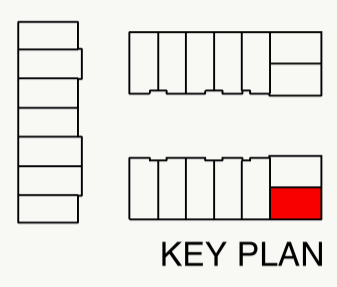


# B1

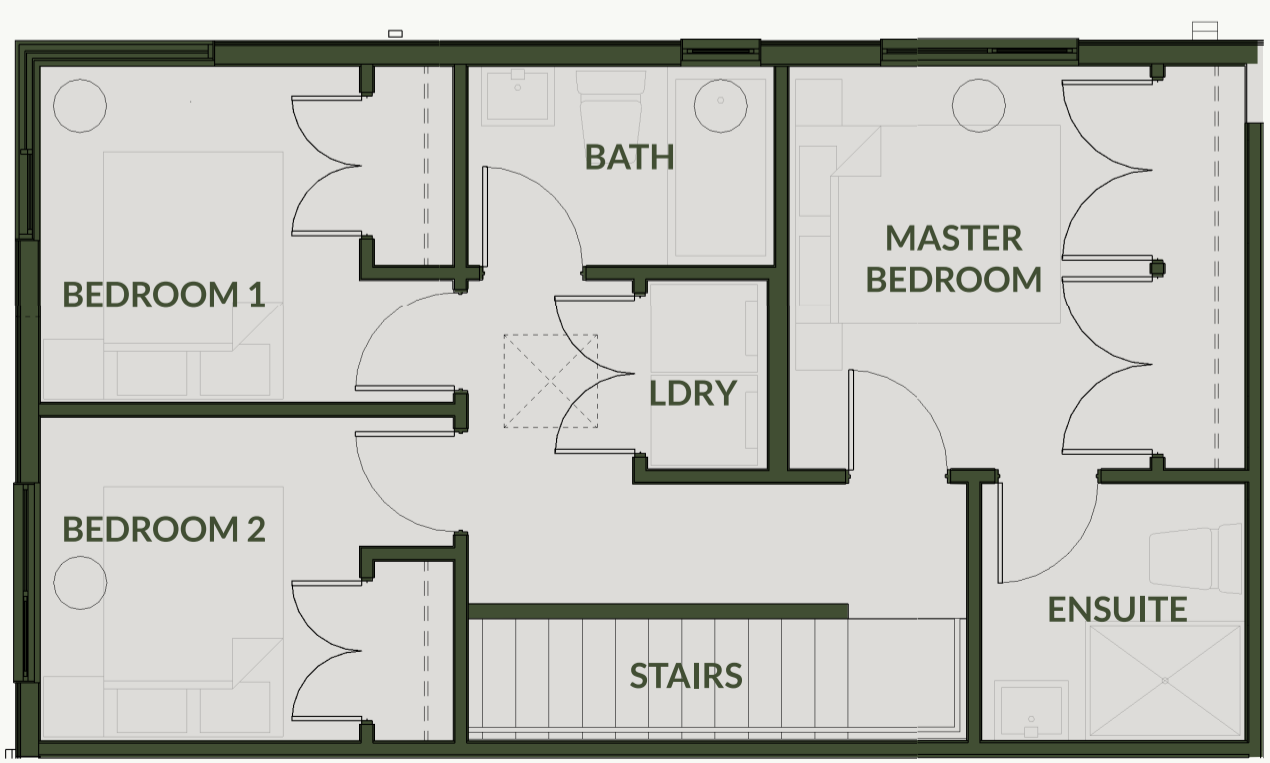
## Main Floor | Above Floor

Interior : 1012 SF  
Exterior : 270 SF  
Total : 1282 SF

B1 - Main Floor



B1 - Above Floor



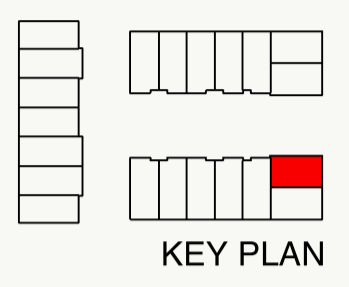
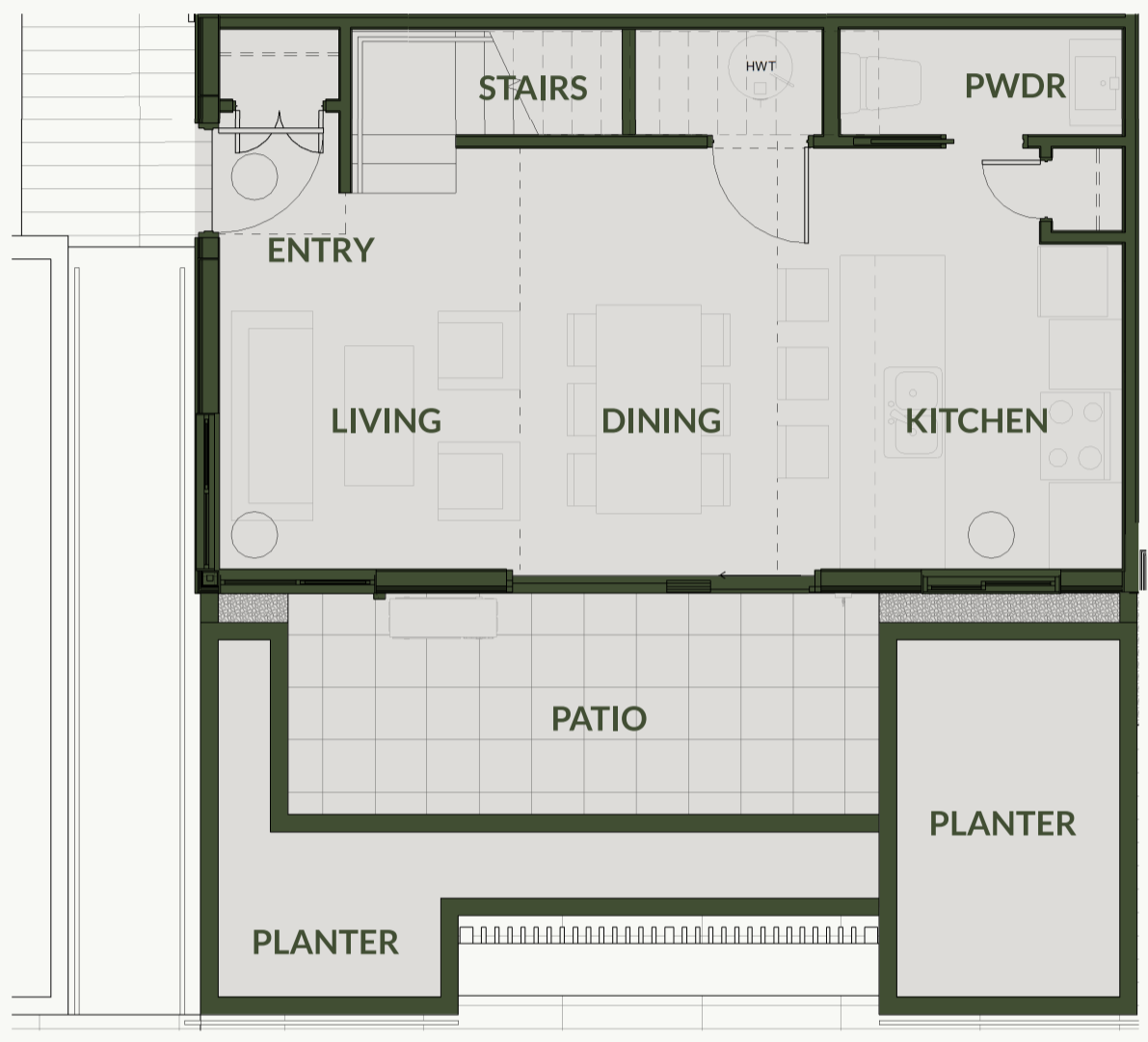


# B2

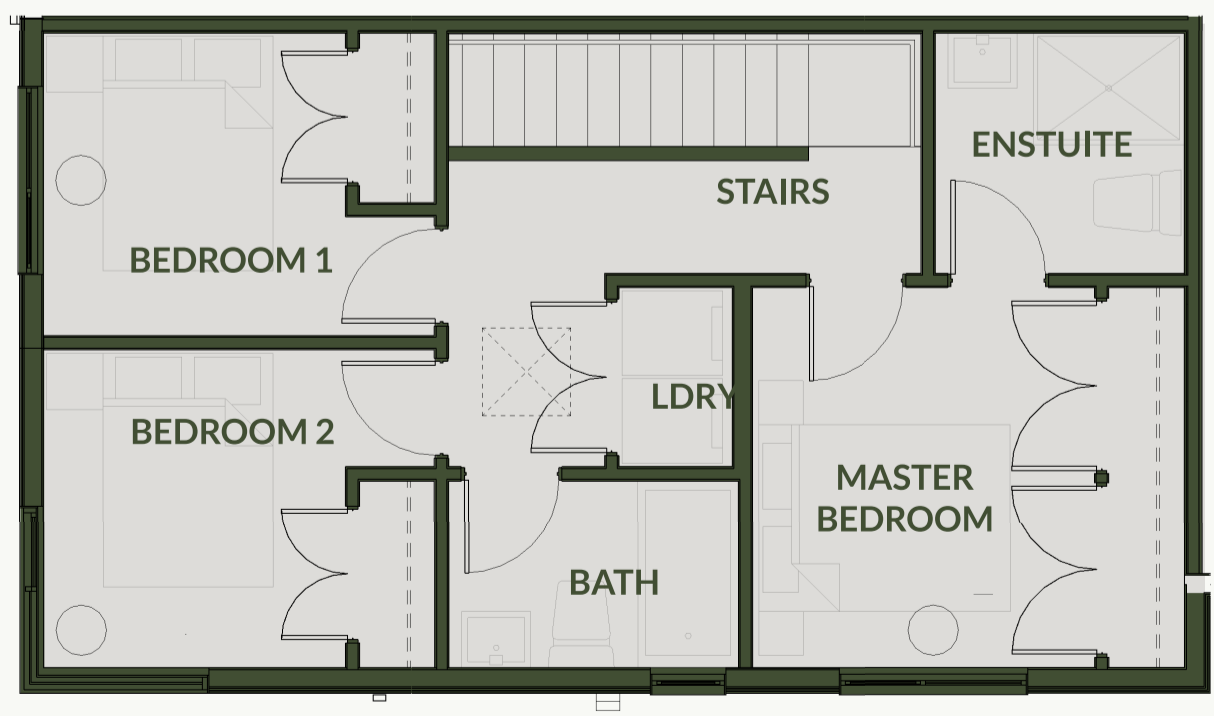
## Main Floor | Above Floor

Interior : 1012 SF  
Exterior : 293 SF  
Total : 1305 SF

### B2 - Main Floor



### B2 - Above Floor

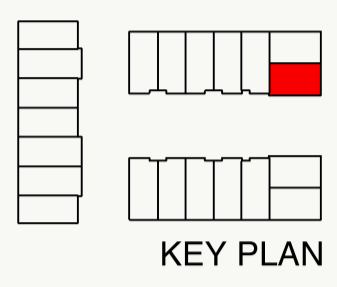
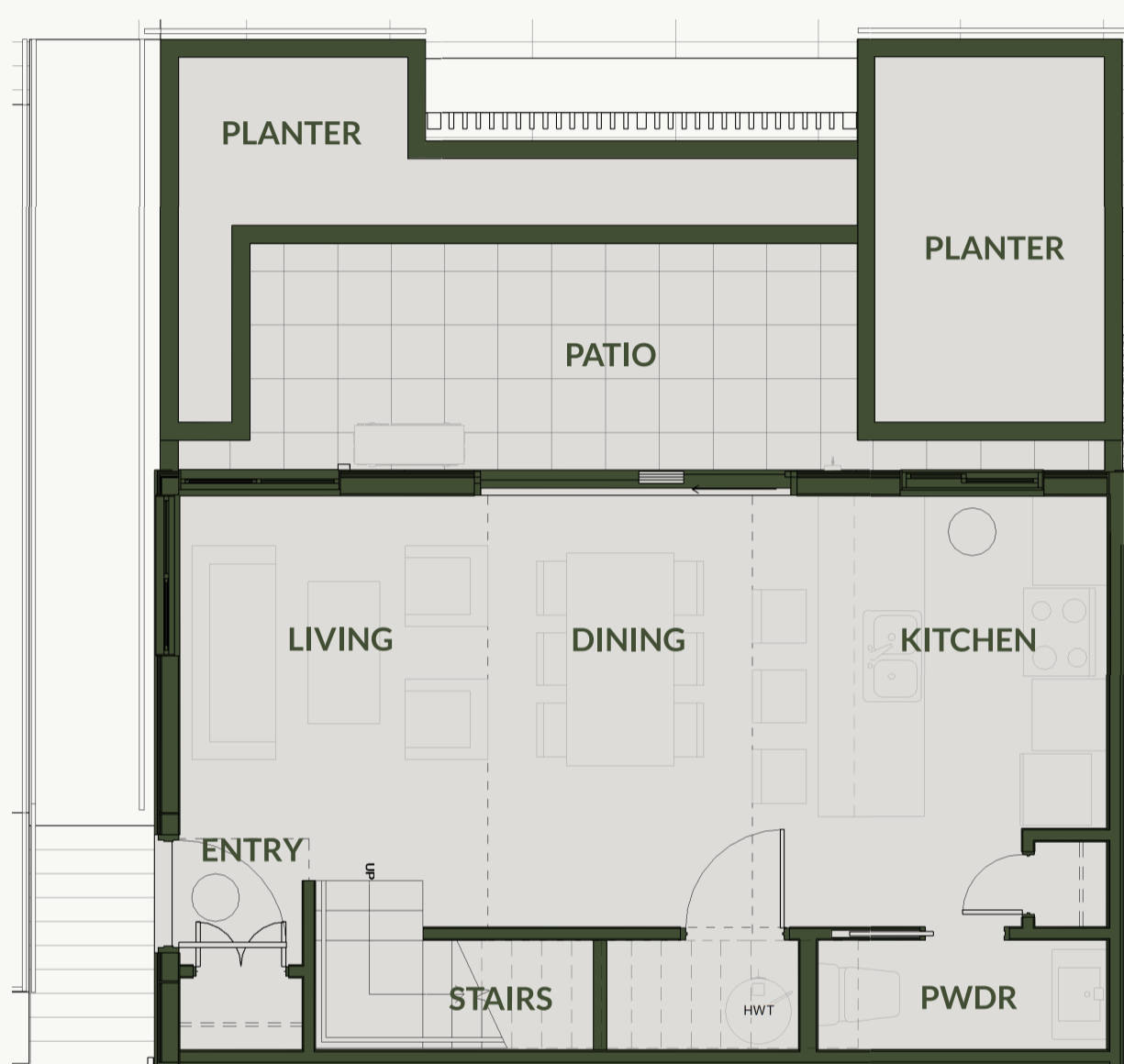


# B3

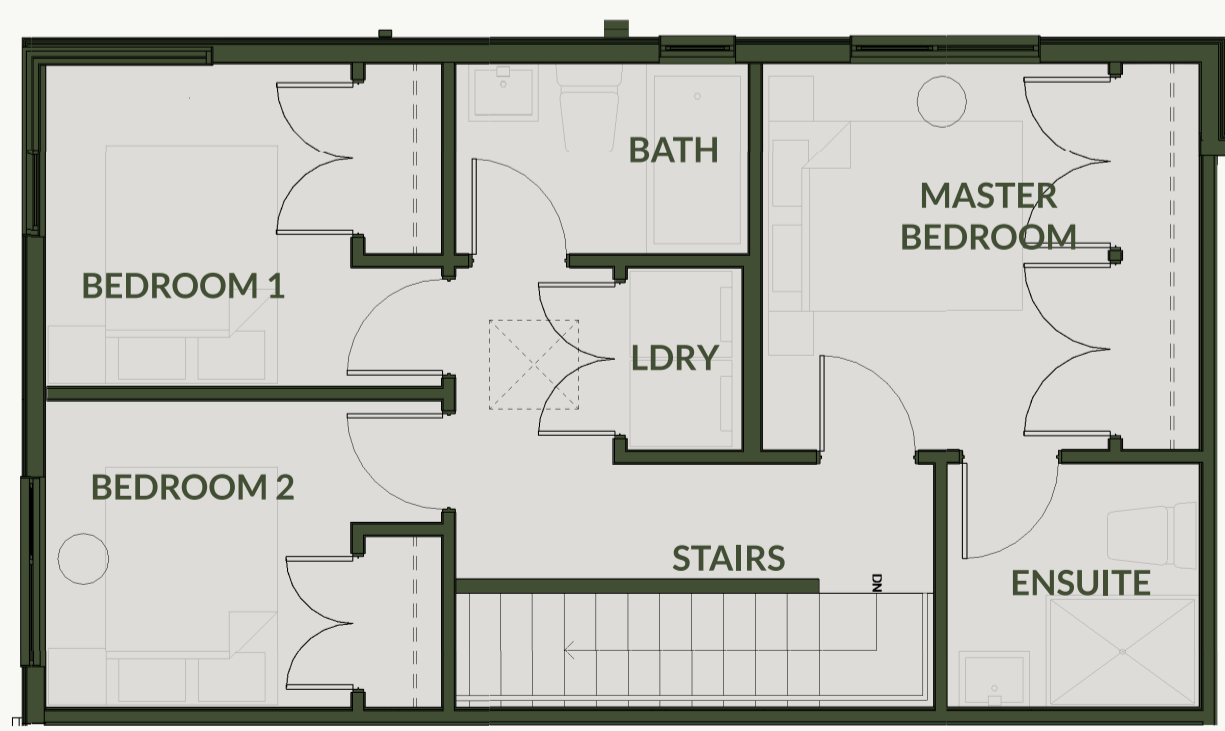
## Main Floor | Above Floor

Interior : 1012 SF  
Exterior : 292 SF  
Total : 1304 SF

### B3 - Main Floor



### B3 - Above Floor

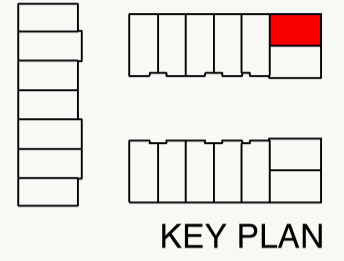


# B4

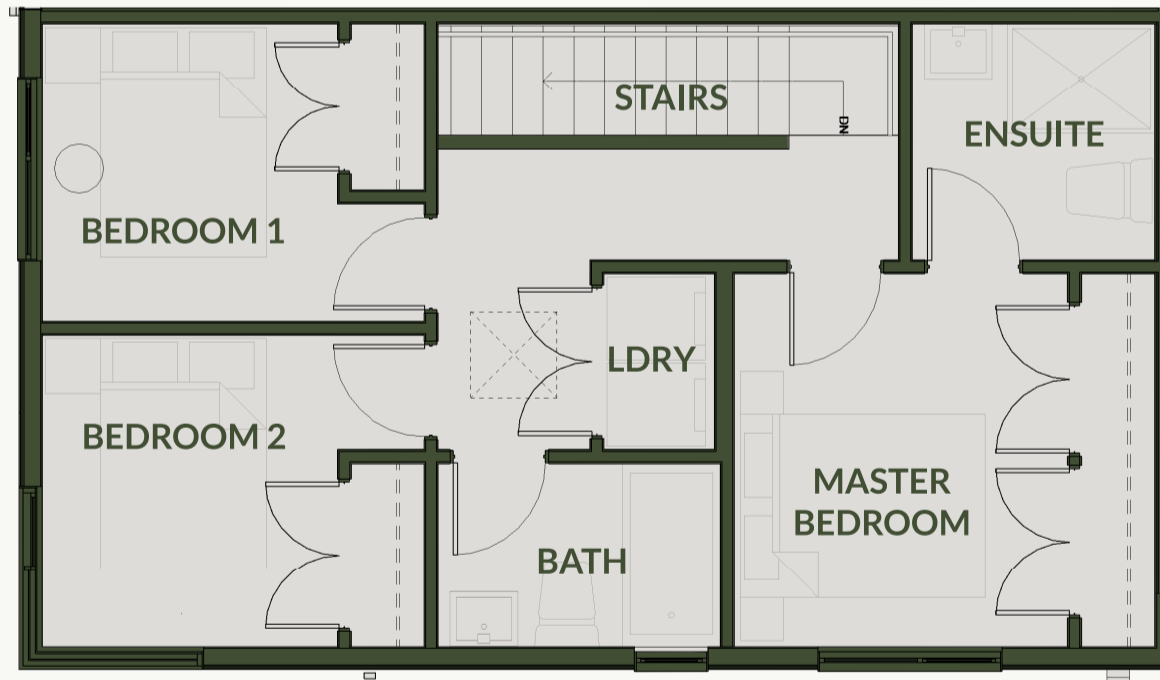
# Main Floor | Above Floor Basement

Interior : 1086 SF  
Exterior : 240 SF  
Total : 1326 SF

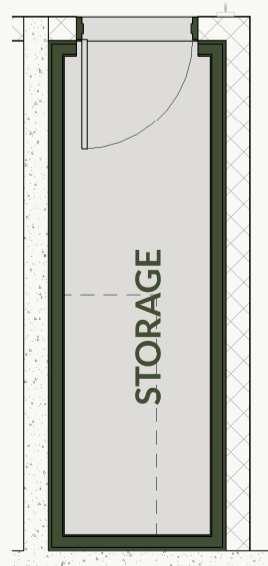
### B3 - Main Floor



### B3 - Above Floor



### B3 - Basement

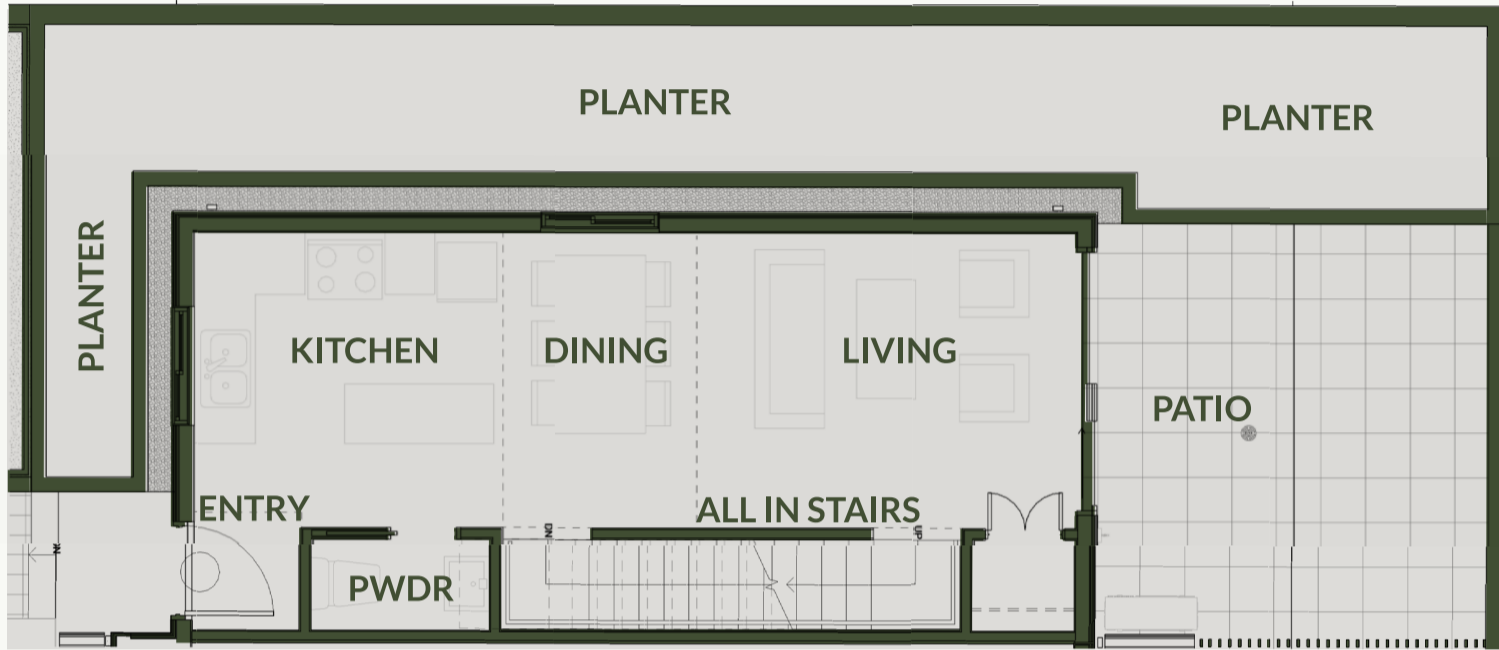
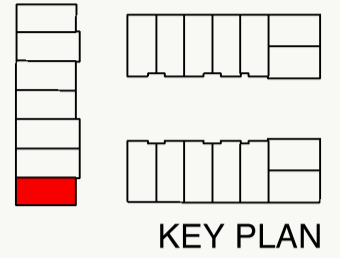


# C1

# Main Floor | Above Floor Basement

Interior : 1389 SF  
Exterior : 199 SF  
Total : 1588 SF

C1 - Main Floor



C1 - Above Floor



C1 - Basement

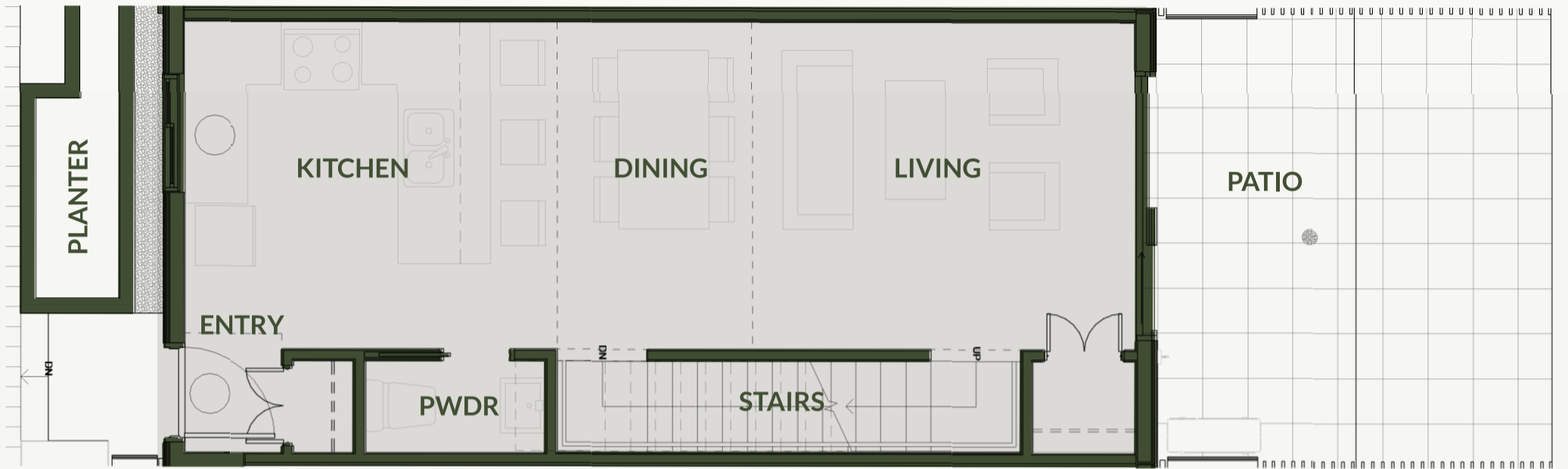
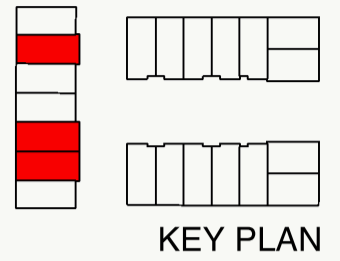


# C2

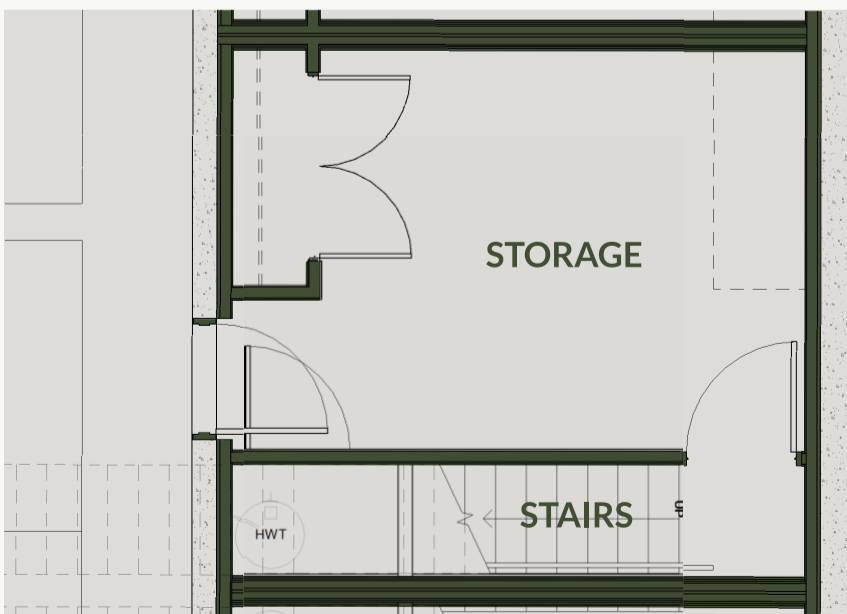
# Main Floor | Above Floor Basement

Interior : 1281 SF  
Exterior : 210 SF  
Total : 1491 SF

### C2 - Main Floor



### C2 - Above Floor



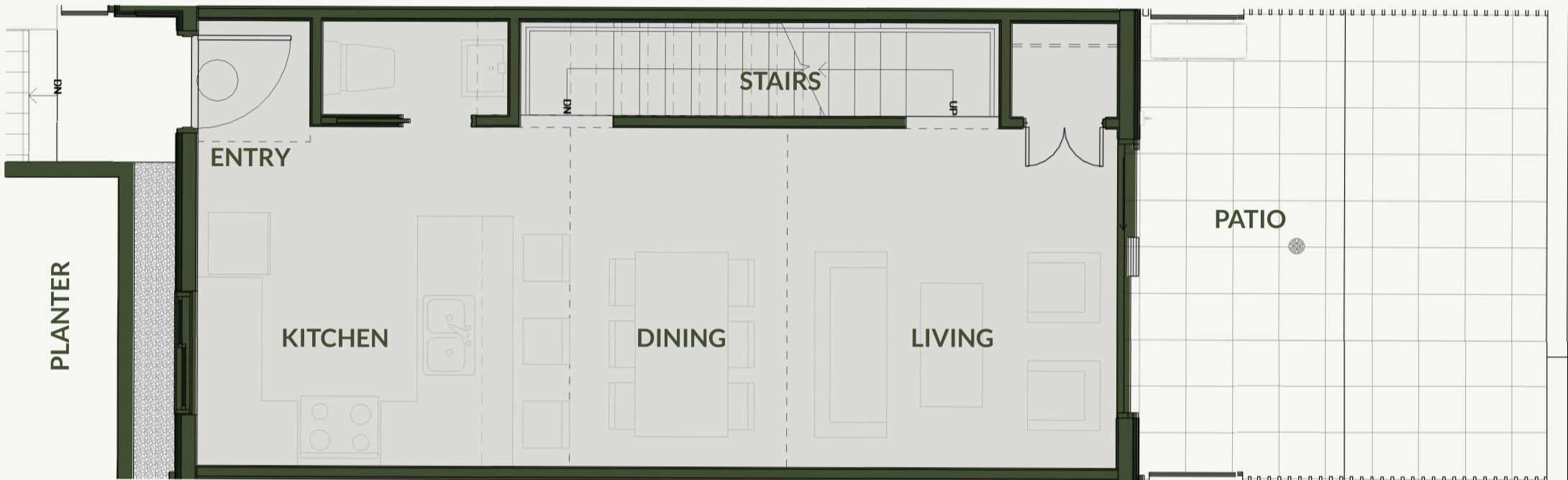
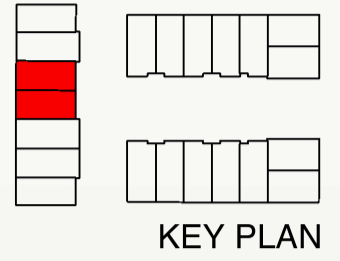
### C2 - Basement

# C3

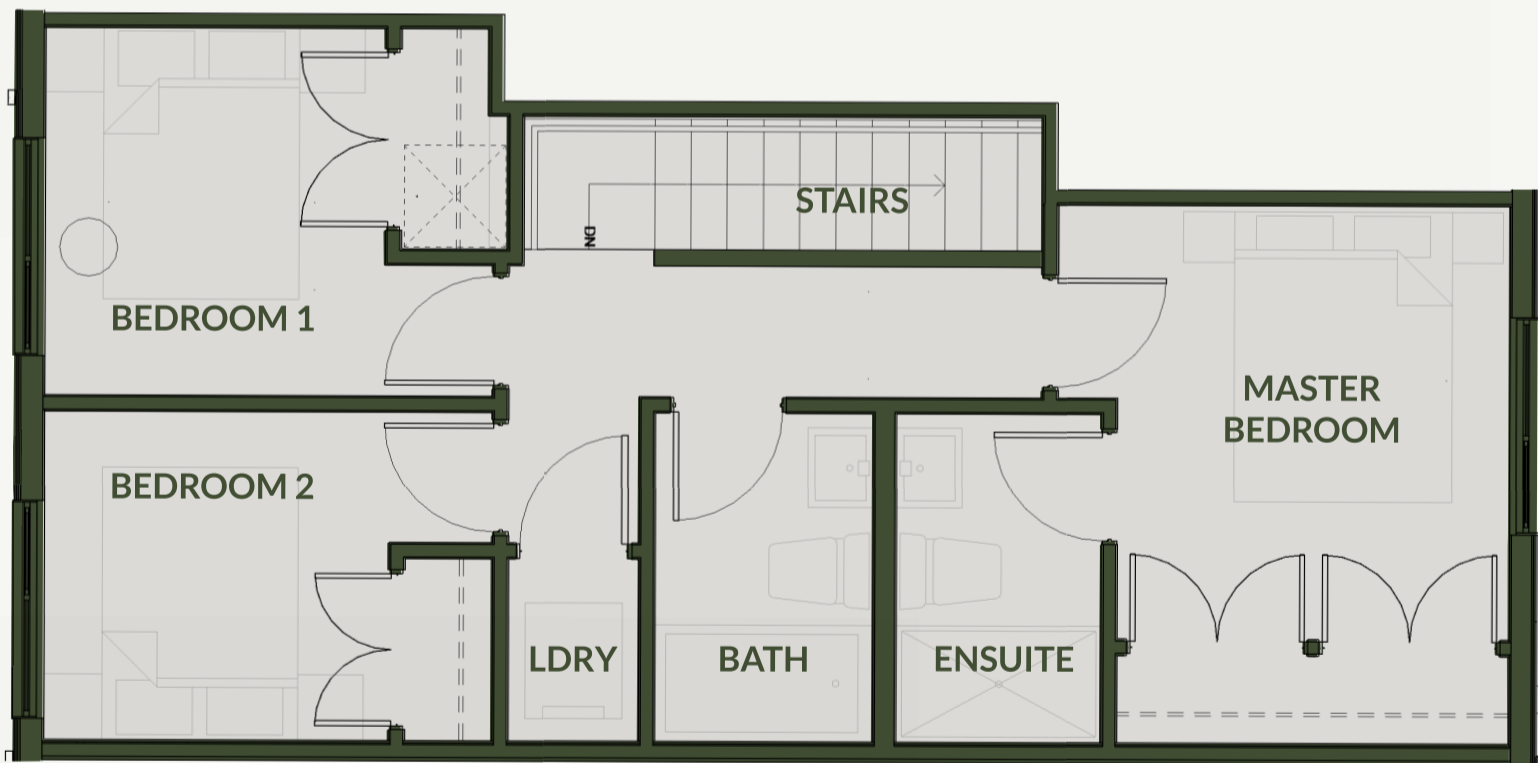
## Main Floor | Above Floor Basement

Interior : 1251 SF  
Exterior : 200 SF  
Total : 1451 SF

### C3 - Main Floor



### C3 - Above Floor



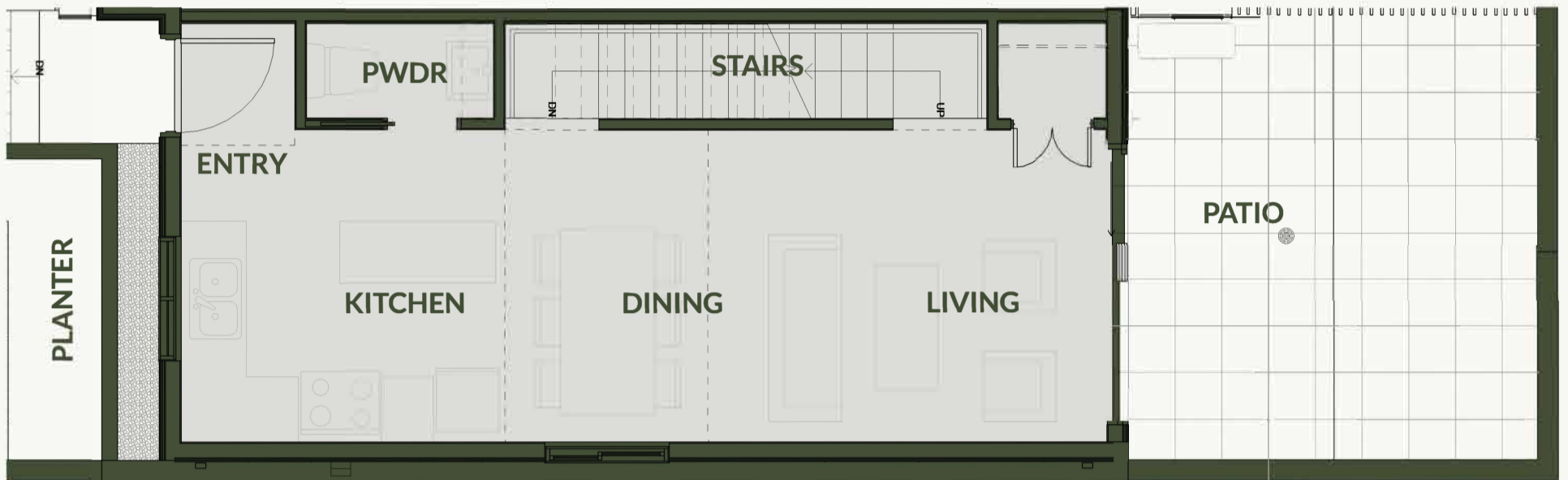
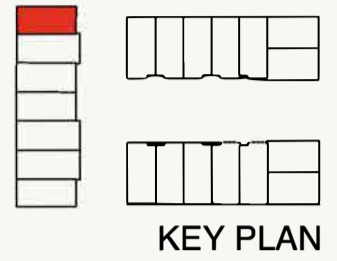
### C3 - Basement

# C4

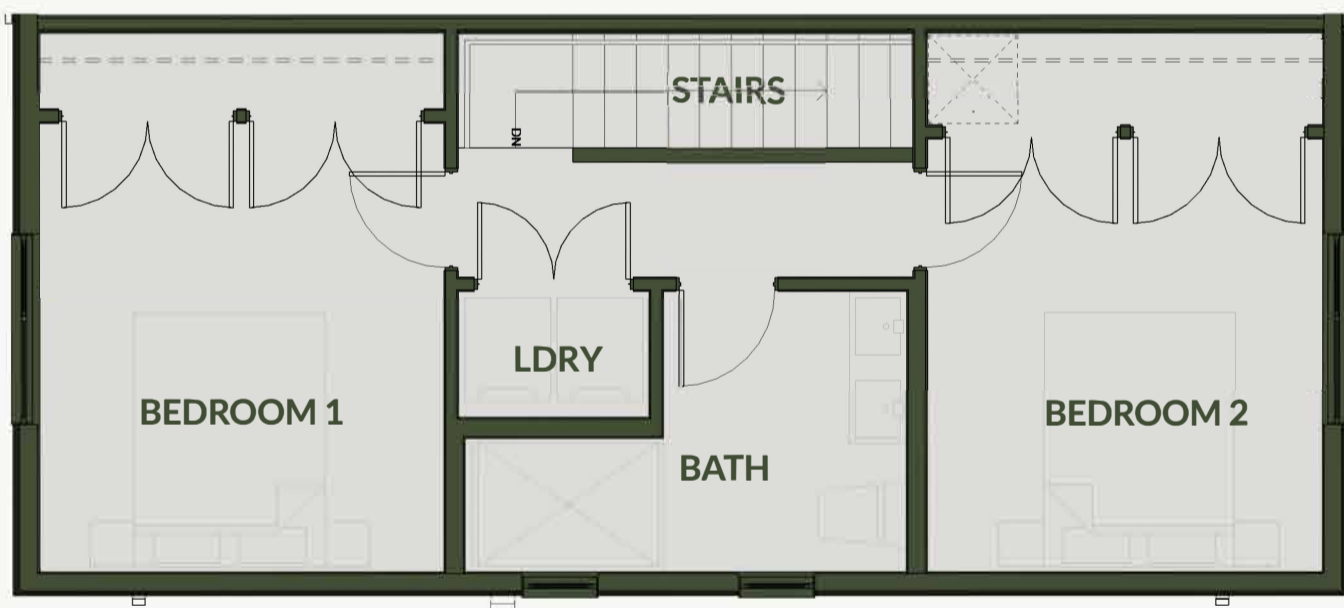
## Main Floor | Above Floor Basement

Interior : 1211 SF  
Exterior : 209 SF  
Total : 1420 SF

### C4 - Main Floor



### C4 - Above Floor



### C4 - Basement





# Eunoia Homes Ltd



604-889-9711  
theidyllic.ca  
7447 & 7453 14TH AVE,  
BURNABY, BC



Architects by  
**GRIMWOOD**  
ARCHITECTURE