



THE IDYLLIC

by Emmaia Homes





THE IDYLLIC

“The Idyllic” is the perfect embodiment of a tranquil lifestyle. Perched in the fringes of Burnaby, this project effortlessly blends urban convenience with private indoor spaces. At each of the 21 town houses of “The Idyllic”, nature meets nurture, creating the perfect canvas of harmonious living.





OUR STORY

"The Idyllic" recognizes the simple yet profound insight - homes aren't just structures, they are the amalgamation of dreams and realities. The idea of fusion captivated us entirely, compelling us to seek ways to provide our clients with the perfect amalgamation of two realms. We also realised that in the stresses of modern life, our connection with nature has been compromised. "The Idyllic" emerged as the perfect solution to harmonise these dualities.

While the amenities and luxuries draw inspiration from contemporary living, the project also offers the allure and charm of nature. Residents can experience the solace of nature while also staying connected to the vibrant pulse of Burnaby's bustling streets.

Come, immerse yourself in "The Idyllic", where every tree shares tales of serene beauty and every corner radiates thoughtful design.



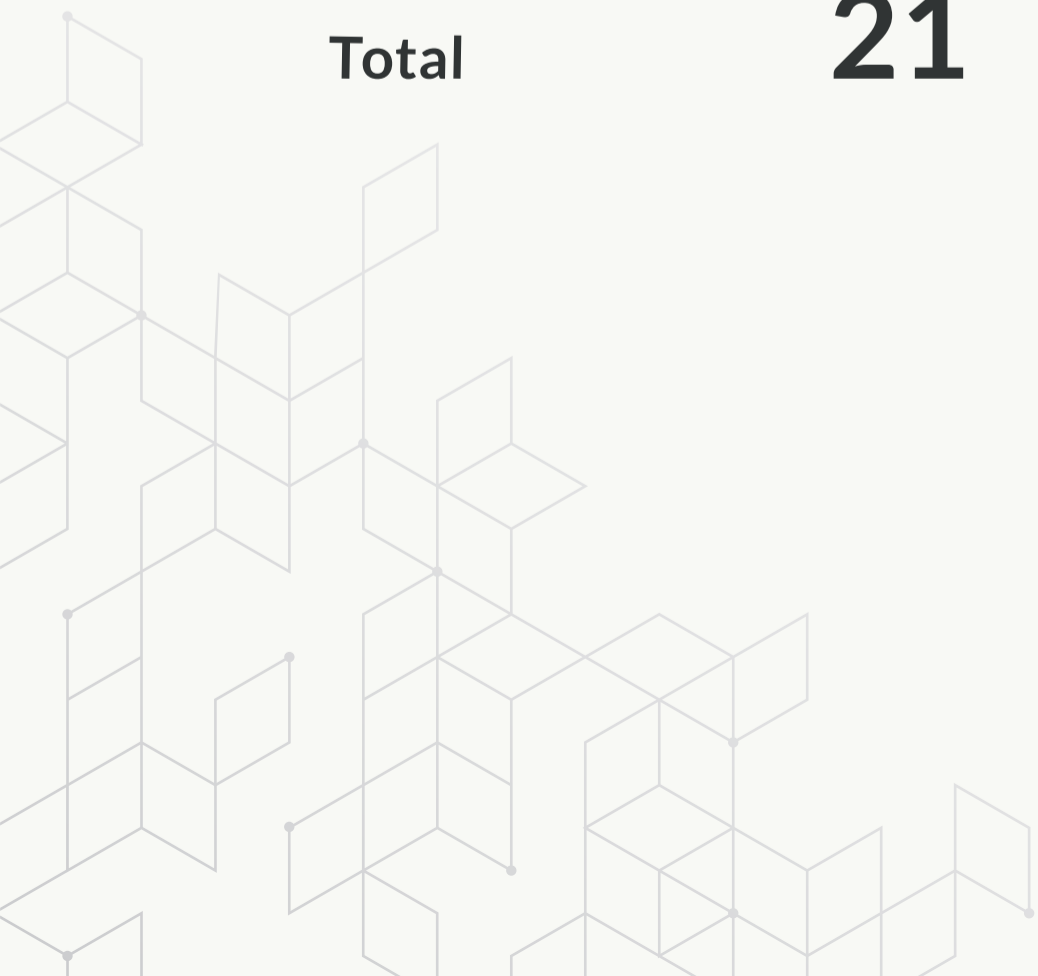
ABOUT THE DEVELOPERS

Known for unwavering dedication to craftsmanship and design, Eunoia Homes have consistently strived to enhance the overall living experience. With years of experience, we have earned a stellar reputation for our commitment to quality, innovation, and meticulous attention to detail.



DETAILS OF THE PROJECT

Building / Complex	Number of Strata Lots	Type of Frame
1	7	Five 3 storey wood frame townhomes Two 2 storey wood frame townhomes
2	7	Five 3 storey wood frame townhomes Two 2 storey wood frame townhomes
3	7	All 2 storey wood frame (Townhouses)
Total	21	Townhomes





THE PROJECT IS IN THE CENTRE OF KINGSWAY AND CANADA WAY



Edmonds community School
800 meters (10 min walk)



Tommy Douglas Burnaby Public Library 950 meters (13 min walk)



Edmonds Community Centre
750 meters (10 min walk)



Edmonds Skytrain Station
1.8 km (3 min by car)



Hilda Avenue Park
350 meters (4 min walk)



Transit Bus stop
150 meters (2 min walk)

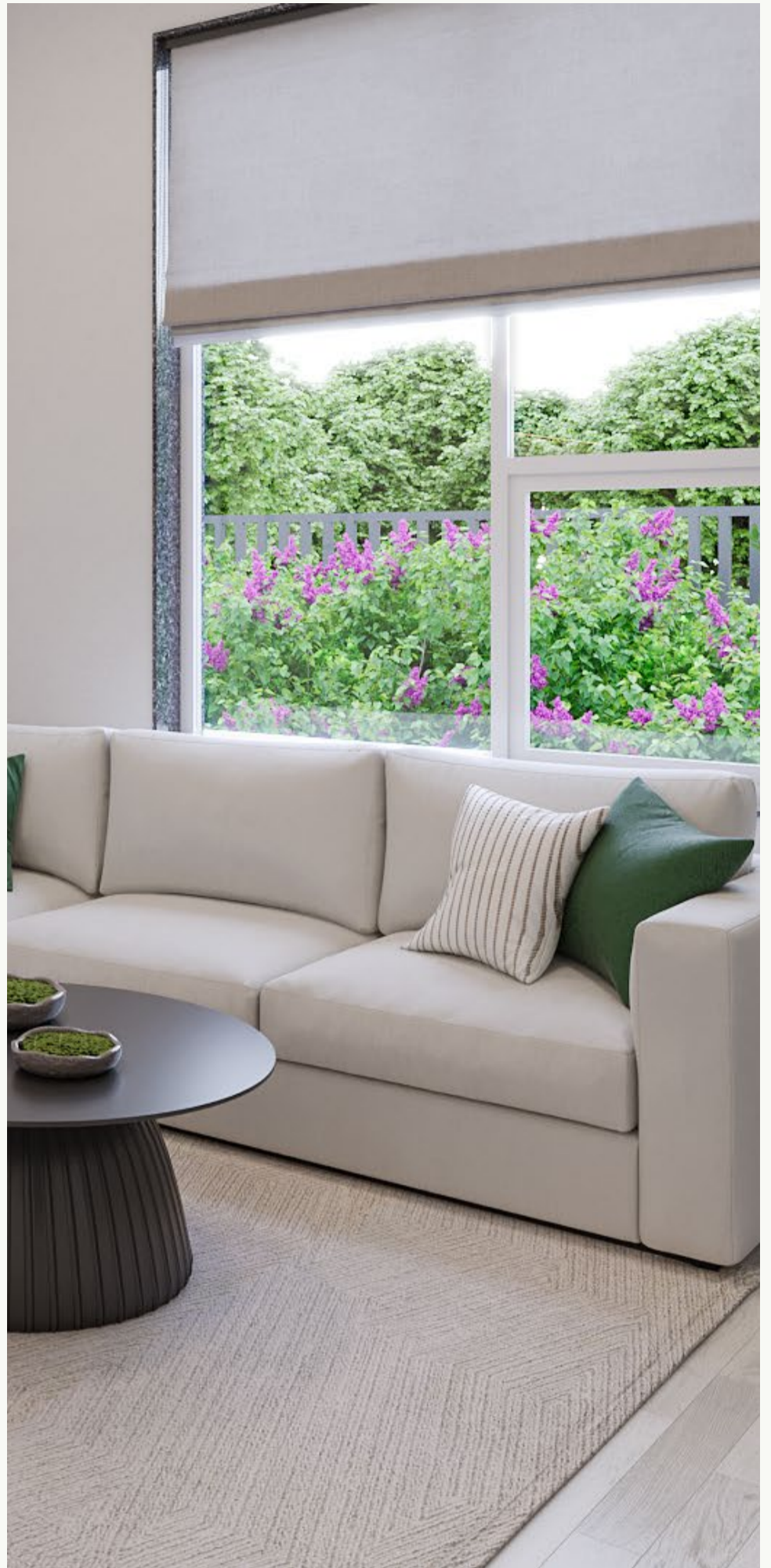


Transit Bus stop
3.9 km (7 min)



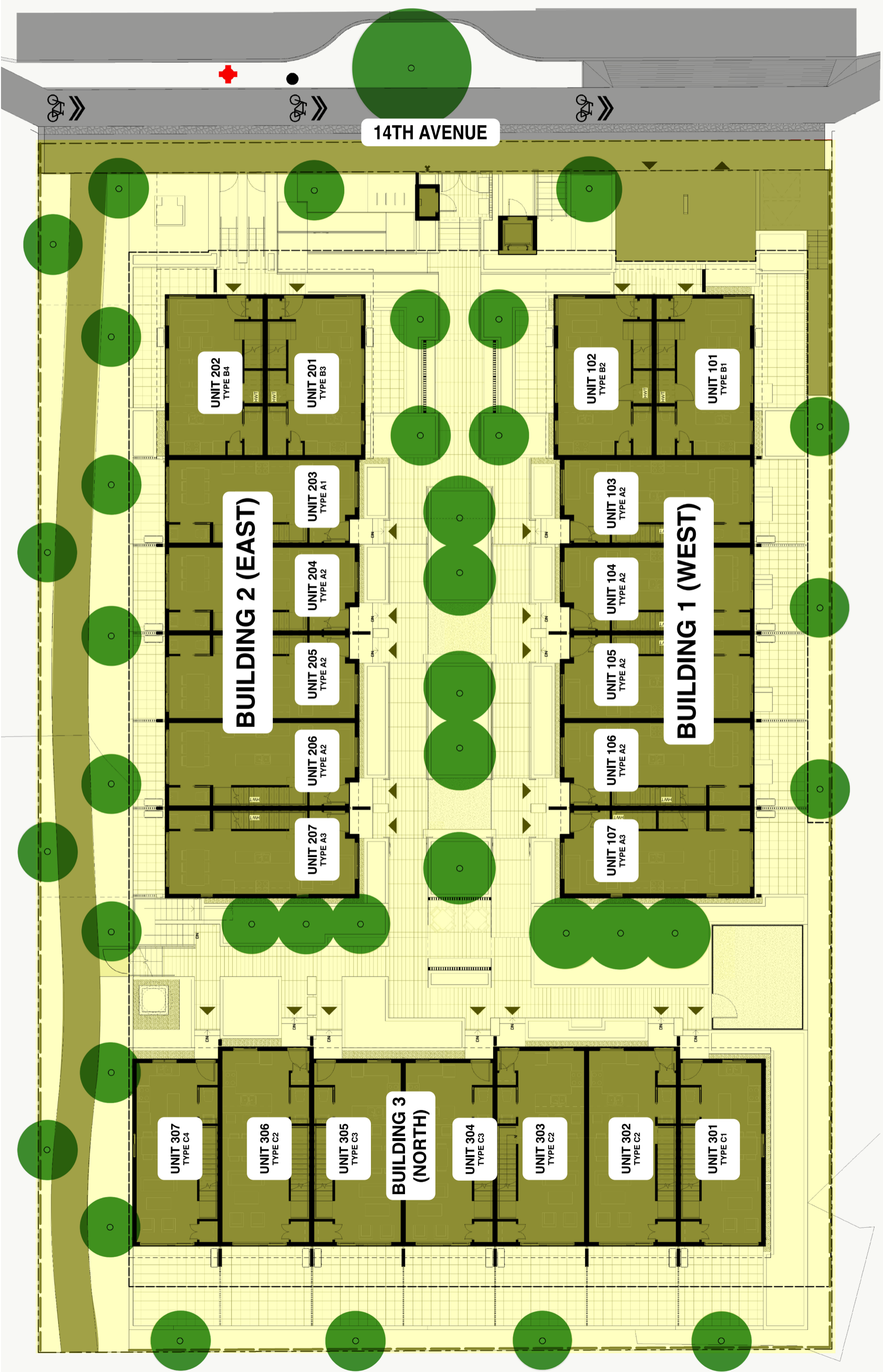
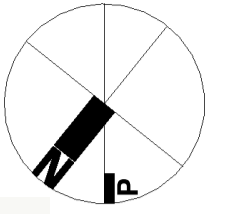
Metropolis at Metrotown
4.3 km (21 min walk)

LUXURIOUS SPACIOUS CONTEMPORARY






“The Idyllic” takes pride in not just creating homes but also in crafting lifestyles. Our interiors are a testament to our commitment to luxury, functionality & style.





**IN EVERY HOME, LIES
COUNTLESS MEMORIES
AND STORIES**

At “The Idyllic”, every house stands as a work of art, carefully crafted to cater to the demands of modern living. Each residence of The Idyllic is a statement of contemporary design and timeless sophistication. Visit our homes and immerse yourself in a world of refined taste.





+1(778)-903-3333
www.theidyllic.ca
7447 & 7453 14TH AVE,
BURNABY, BC

Developed by
Eunoia Homes Ltd

Architects by
GRIMWOOD
ARCHITECTURE